



VALCOUR SAILING CLUB

PO BOX 1362

PLATTSBURGH, NEW YORK 12901

www.valcoursailingclub.org

Officers, Committees, Liaisons 2009

Officers	Name	e-mail address
Commodore:	J.P. Turgeon	commodore@valcoursailingclub.org
Vice-Commodore:	Andy Sajor	vice-commodore@valcoursailingclub.org
Rear Commodore:	Tim McCormick	rear-commodore@valcoursailingclub.org
Secretary:	Dee Surber	secretary@valcoursailingclub.org
Treasurer:	Don Duley	treasurer@valcoursailingclub.org
Member-at-Large:	Justin Dubois	member-at-large@valcoursailingclub.org
LCPHRF Rater:	Brian Dowling	rating@valcoursailingclub.org

Committees	Chair
Committee Boat:	Dave Bashaw and Ed Trombley
Membership:	J.P Turgeon
Protest:	
Race:	Andy Sajor
Rating:	Brian Dowling

Liaisons	Name	e-mail address
Cumberland Bay Community Boating Center:	Chris Duley	topher@westelcom.com
Sponsorship:	J.P. Turgeon	
Webmaster:	Beth Barnes	

Introduction

In the spring of 1966, Valcour Sailing Club was launched out of the desire for organized racing on a regularly scheduled basis. At that time, racing was limited to weekends, one week the race was on Saturday, the second week, the race was on Sunday. As the years passed, so has the scope of organized racing. VSC now provides organized racing for two weekday series; Tuesday evening Soling races and Wednesday evening PHRF races as well as weekend Soling and PHRF Races.

The PHRF Sunday Series consists of nine-cup races.

1. COMMODORE'S CUP

First scheduled for the 1976 sailing season during the administration of Commodore Wayne Twining and has been scheduled each sailing season since. It is dedicated to the office of the Commodore of VSC. Its precursor was the Lighthouse Cup race, established by Peter Hornby and his crew in 1974, as the first race of the season. The Commodore's Cup was built and donated by Commodore Twining. Due to a schedule conflict, this season the Commodore will host an after race reception/BBQ after the Kent Delord Race.

2. KENT DELORD CUP

First run on July 6, 1986 in the vicinity of the war of 1812's Battle of Plattsburgh (Cumberland Bay). It kicked off the week of the Mayor's Cup festivities and was a fundraiser for the Kent Delord House Museum located in Plattsburgh. The course was originally designed as a Mayor's Cup "warm up" race and used a modified Mayor's Cup racecourse. It no longer is a fundraiser, connected with the Mayor's cup festivities or uses a Mayor's cup race format.

3. ISLE ST. MICHEL Race

Named after Crab Island, known as Isle St. Michel by the colonial French. The Isle St. Michel was first scheduled by VSC as part of the now defunct Lake Champlain Racing Conference race series between VSC, Mallets Bay Boat Club and Lake Champlain Yacht Club. It was initially held in early September as a one-day race in the area of Valcour Island and Cumberland Bay.

4. CRACKED POT

VSC has held a Fourth of July race since 1967, known alternatively as the 4th of July Race (1967), Independence Day Race (1968), Special Race (1969), Skippers Race (1971-1974), and the Standing Start Race (1975). For many years the Cracked Pot race started with all boats at anchor and sails lowered. Each boat would be given a different starting time based on its handicap rating with the slowest boat starting first, then the next slowest and so on until the entire fleet had started. The winner would be the crew of the first boat to cross the finish line. The winner would be required to drink beer from a full cracked bedpan (the original Cup). Over the years, the Le Mans start fell out of favor and, with the advent of

strict drinking laws, so did the quaffing. The staggered handicap start has endured and will be used once again this season.

5. EISENGER CUP

Initiated in 1980 as a memorial to Dr. Peter Eisenger, a dedicated sailboat racer and beloved member of VSC, the Eisenger Cup first ran as one of three special events in the race schedule. It evolved into a regatta, for a time consisting of three races in one day and now consisting of two races.

6. VALCOUR RACE

Named after Valcour Island and the area south of Plattsburgh known as Valcour, where many of the founding members of VSC lived. Like the Isle St. Michel, the Valcour Race was first scheduled by VSC as part of the now defunct Lake Champlain Racing Conference race series. It was initially held in early June as two one-day races held on the same weekend.

7. McDOWELL CUP

Dedicated to Dr. David McDowell, the first honorary lifetime member of VSC. First scheduled in 1991, the McDowell Race would traditionally start and finish within view of Dr. McDowell's residence located in Valcour. After the race a "raft-up" of participating boats would be held. In recent years interest in the raft-up has declined, and after race festivities are alternatively planned

8. GORMAN CUP

The Gorman Cup will be initiated in 2008 as a memorial to Dr. David Gorman, a dedicated sailboat racer in PHRF and One Design on Lake Champlain and elsewhere. In the first year the Race will be held on Mayor's Cup weekend with support from David's many friends in the Lake Champlain sailing community.

9. NAKED TURTLE RACE

Established in 2003, this race is a thank you to the Naked Turtle Restaurant, which has unselfishly supported VSC and provided VSC with an unofficial point of after race debriefing.

In addition to the nine PHRF series races, the VSC is proud to work with the Clinton Community College Foundation by organizing the **CLINTON COMMUNITY COLLEGE REGATTA**. This Saturday regatta will be held in Plattsburgh Bay with entertainment after the regatta at the Naked Turtle sponsored by the CCC Foundation.

Valcour Sailing Club

Lake Champlain PHRF

2009 Notice of Race

1 Organizing Authority

The organizing authority is the Valcour Sailing Club, Inc. (VSC). This publication shall serve as Notice of Race for all VSC sponsored events, unless otherwise notified.

2 Rules

All events will be governed by the Racing Rules of Sailing (RRS) 2009-2012. This Notice of Race will stand except as amended or altered by the Sailing Instructions, or properly posted amendments on the VSC website at valcoursailingclub.org.

3 Advertising

All events will be category C events in accordance with RRS 79 and ISAF Advertising Code Regulation 20.

4 Eligibility and Entry

A boat must be sponsored by a regular member of the VSC. A regular or associate member of the VSC must be on the boat while racing. VSC guests are allowed to compete in individual races without a VSC member aboard. All boats must be in compliance with appropriate Federal and State safety laws, rules and regulations, and sign a VSC entry form. Boats must have a valid PHRF certificate issued by Lake Champlain PHRF prior to competing.

5 Classes

Any boat with a PHRF rating from LCPHRF is eligible to participate in VSC PHRF races. In addition to a racing (spinnaker) class, a cruising (white sails or JAM, Jib and Main) start will be run when warranted (two or more boats).

6 Safety

6.1 A boat that retires from a race must notify the Race Committee as soon as possible.

6.2 The skipper is ultimately responsible for the safety of his boat and crew.

6.3 All boats must carry equipment required by the US Coast Guard and any applicable Federal, State, and local authorities.

7 Remedies Not Specified

Any situation or event, for which a specific remedy cannot be found in these Sailing Instructions or the 2006 - 2008 Racing Rules of Sailing as adopted by the United States Sailing Association, shall be referred to a committee appointed by the Commodore and shall consist of three or more VSC members none of which shall be affected by the outcome of the remedy.

8 Liability

The owner of a boat, by his entry into an event, agrees to hold harmless and indemnify the VSC, its officers, and any person involved in running the regatta, for any claim arising out of participation in a VSC event, by any and all people on his boat.

9 Racing Area

All VSC events shall start on Cumberland Bay.

10 Scoring

10.1 Handicap System. The Time-On-Time method of PHRF corrected time calculation will be used for all PHRF races except the Cracked Pot race, which shall be Time-On-Distance. Time-On-Time correction factors will be used in accordance with the average wind strength for each race.

Correction factors are as follows.

<u>WIND</u>	<u>TIME CORRECTION FACTOR</u>
0 - 6 knots	$\frac{A}{600 + \text{Your PHRF}}$
6.1 – 15 knots	$\frac{A}{550 + \text{Your PHRF}}$
15.1 + knots	$\frac{A}{480 + \text{Your PHRF}}$

The numerator, A, is a coefficient that makes a balanced TCF. It will be selected so that the TCF for the middle of the fleet is about 1.000.

The average wind strength of the race shall be the average of the wind readings taken by the O.D. and recorded on the O.D. race form from the start of the race and at every fifteen minute interval thereafter until the last boat finishes the race. Readings may be taken with any available anemometer, or by personal estimation made by the O.D.

10.2 Race Scoring. The Low Point Scoring System, Appendix A2 of the RRS, will be used.

10.3 Series Scoring.

10.3.1 PHRF Wednesday Night A & B Series

The A series will have 7 races with one throw out. The B series will have 8 races with one throw out.

10.3.2 PHRF Sunday Series

This series will consist of nine events with two throw outs and one OD bye.

11. AWARDS

11.1 PHRF Wednesday Night A & B Series

Trophies will be awarded (when they become available) to first, second, and third place finishes in each series at the fall banquet.

11.2 PHRF Sunday Races

A perpetual trophy will be awarded to the boat with the lowest corrected time after the race at the Naked Turtle.

11.3 PHRF Sunday Series

Trophies will be awarded to first, second, and third place finishes in each series at the fall banquet.

11.4. BROACH OF THE YEAR: This award is presented to the boat that has the most spectacular broach of the season.

11.5. MOST IMPROVED BOAT: This award is presented to the boat that has demonstrated the greatest degree of improvement from the previous season.

11.6 PHRF BOAT OF THE YEAR: This award is presented to the boat with the lowest overall score of all PHRF series races combined (no throw-outs).

11.7 CREWMEMBER OF THE YEAR: This award is presented to the crew member that had consistent participation throughout the season on weekdays and weekends, was an integral part of his or her crew and boat, showed a high degree of camaraderie with his or her own crew as well as other boats in the spirit of fun and fair sportsmanship, and showed interest and participated in the club's activities such as, race committee, executive meetings, and club social events.

12. Schedule of Events:

Date	Race	Primary OD	Secondary OD
27-May	PHRF Warmup	Sajor	
31-May	Commodore's Cup	Gallilee	
3-Jun	PHRF 1	USA 850	
9-Jun	Soling 1	Gallilee	
10-Jun	PHRF 2	CAN 225	
14-Jun	Kent Delord	USA 850	
16-Jun	Soling 2	Gallilee	
17-Jun	PHRF 3	USA 850	
23-Jun	Soling 3	Gallilee	
24-Jun	PHRF 4	CAN 225	
28-Jun	Isle St. Michel	C Meyerson	
30-Jun	Soling 4	Gallilee	
1-Jul	PHRF 5	USA 850	
4-Jul	Cracked Pot	A. Sajor	
5-Jul	Eisenger Cup	Soundwave	
7-Jul	Soling 5	Souvenir	
8-Jul	PHRF 6	CAN 225	
11-Jul	MAYORS CUP	AM ROTARY	
12-Jul	Valcour Race	D Duley	
14-Jul	Soling 6	Souvenir	
15-Jul	PHRF 7	CAN 225	
21-Jul	Soling 7	Souvenir	
22-Jul	PHRF B1	USA 780	
28-Jul	Soling 8	Souvenir	
29-Jul	PHRF B2	USA 780	
2-Aug	McDowell Cup	Freya	
4-Aug	Soling 9	D. Duley	
5-Aug	PHRF B3	USA 780	
11-Aug	Soling 10	D. Duley	
12-Aug	PHRF B4	USA 780	
14-Aug	Soling NA	Dave Bashaw	Don Duley
15-Aug	Soling NA	Dave Bashaw	Kjell Dahlen
16-Aug	Soling NA	Dave Bashaw	Kjell Dahlen
18-Aug	Soling 11	Freya	
19-Aug	PHRF B5	USA 833	
22-Aug	CCC Regatta	A Sajor	
23-Aug	Gorman Cup	Brian Dowling	
25-Aug	Soling 12	D. Duley	
26-Aug	PHRF B6	USA 833	
1-Sep	Soling 13	Soundwave	
2-Sep	PHRF B7	USA 833	
8-Sep	Soling 14	Soundwave	
9-Sep	PHRF B8	USA 833	
20-Sep	Naked Turtle/ Sunday Make-up		
26-Sep	LC Soling Champs		
27-Sep	LC Soling Champs		

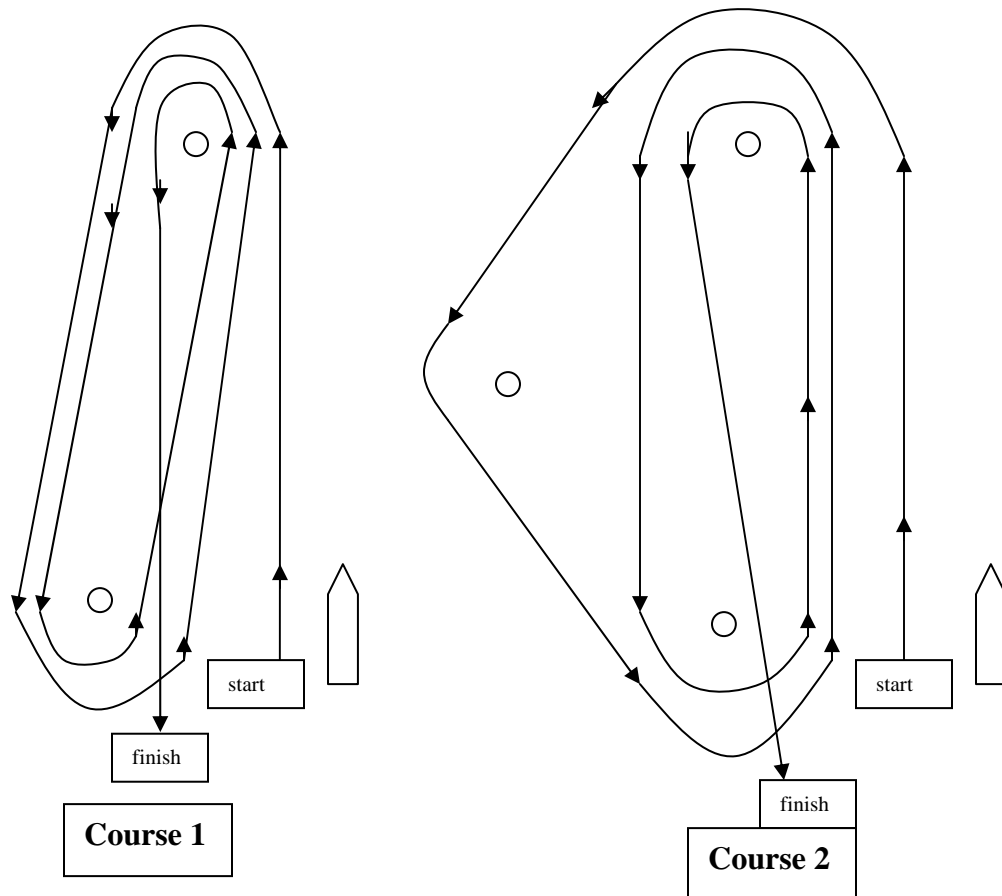
Valcour Sailing Club Lake Champlain PHRF 2009 Sailing Instructions

1. Courses

The Committee boat shall display the course number. When courses 1 and 2 are selected the marks to be rounded for the first lap shall be displayed after the course number.

1.1 PHRF Wednesday Series Courses shall be selected from course numbers 1 - 2.

1.2 PHRF Sunday Series Courses shall be selected from racecourse numbers 5 – 26 except The Eisinger Cup Regatta which shall be two races of course 1 or 2.



Courses 1 and 2 may be shortened at any mark.

2. RACECOURSE NUMBERS 5 - 26

A. (s) denotes that the mark is rounded to starboard; otherwise the mark is rounded to port.

B. Start column shows the designated starting mark.

- C.** Description column denotes the marks in the order they are to be taken. The last denotation is the finishing mark.
- D.** Distance column is the sum of the point-to-point distances between marks.
- E.** Wind column is the *suggested* use for a particular wind strength (knots) pre-start of the race. Other considerations for course selection are weather and water conditions.
- F.** No redress or protest will be heard based on course selection.
- G.** Course may be shortened at any mark described on the course except islands.
- H.** Some permanent marks may not be available for use. Unavailable courses for this year are listed in *italics*.

#	Wind	Start	Description	Distance
South to South South West Wind (180° - 202.5°)				
5	10-15+	GC1	CI, RN2(s), GC3, RN4, RN28, RN26, RN24, S, N, GC1	15.8
6	10-15+	GC1	CI, RN2(s), GC3, RN4, GC3(s), RN2, CI(s), GC	13.9
7	<6- 10	N	S, N, S, N	10.4
South to South South East Wind (180° - 157.5°)				
8	10-15+	N	S(s), PI, CPI, PI(s), S, N	15.7
9	10-Jun	GC1	S, N, GC1, S, GC1	9.4
10	<6	GC1	S, GC1, S, GC1	7.9
South South East to South East Wind (157.5° - 135°)				
11	<6-15+	GC1	O, GC1, O, GC1	varies
South East to East South East Wind (135° - 112.5°)				
12	<6-15+	W	RN24(s), O, RN24, W, RN24(s), O, RN24, W (O located as windward mark)	varies
13	<6-10	GC1	E, GC1, E, GC1, E, GC1	9.6
East South East to East Wind (112.5° - 90°)				
14	<6-15+	O	E, O, E, O, E, O, E, O (O located South to South East of BWR approx N44°41.115' W73°26.385')	varies
East to East North East Wind (90°-67.5°)				
15	<6-15+	O-L	O-W, O-L, O-W, O-L, O-W, O-L (windward-leeward course O-L is leeward mark, O-W is windward mark)	varies
East North East to North East Wind (67.5° - 45°)				
16	<6-15	O-L	O-W, O-L, O-W, O-L, O-W, O-L (windward-leeward course O-L is leeward mark, O-W is windward mark)	varies
North East to North North East Wind (45° - 22.5°)				
17	<6-15+	O	N, O, N, O, N, O (O located east of Plattsburgh Air Force Base approx. N44°40.616' W73°26.521')	18.4
North North East to North Wind (22.5° - 0°)				
18	10-15+	S	N, CI, RN2(s), GC3, RN4, GC3(s), RN2, CI(s), GC1	17.2
19	10-15+	S	N, CI, RN2(s), GC3, RN4, RN28, RN26, RN24, S	15.7
20	<6-15	S	N, S, N, S, N, S	15.6
North to North North West Wind (0° - 337.5°)				
21	10-15+	S	GC1, RN24(s), PI, CPI, PI(s), RN24, S, GC1	16.6
22	<6-10	S	GC1, S, GC1, S, GC1, S	11.9
North North West to North West Wind (337.5° - 315°)				
23	<6-15+	O	GC1, O-L, GC1, O-L, O (O located between GC1 and O-L approx. 1.5 nautical miles from GC1 Do Not Go Through Start/Finish Line After Start Unless Finishing)	varies
West North West to West Wind (292.5° - 270°)				
24	<6-15+	E	O, E, O, E, O, E, O, E (O location Southeast of BWR approx. coordinates N44°41.115' W73°26.385')	16.2
West to West South West Wind (270° - 247.5°)				
25	<6-15+	O	W, O, W, O, W, O, W, O, W, O	varies
Flexible Course (any direction)				
26	varies	O	4 windward-leeward laps around appropriate permanent mark	varies

2. VSC RACING MARKS

2.1 VSC permanent marks located within Cumberland Bay are white cylinders designated by their compass heading as viewed from the center of Cumberland Bay..

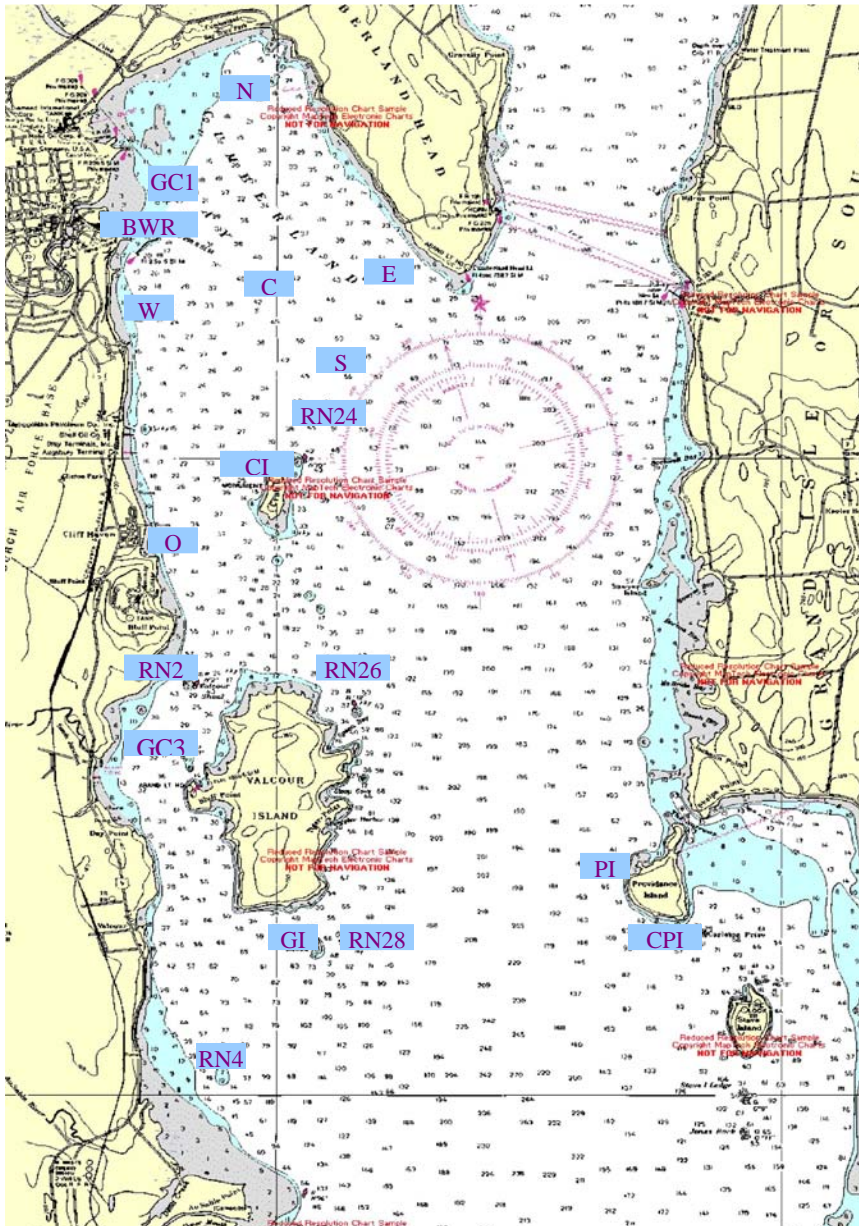
2.2

2.3 Islands are designated by the first letter of each word in its name followed by an “I”.

2.4 Navigation buoys are either green cans or red nuns designated by its designation on the most recent NOAA navigation chart.

2.5 The following marks may used to describe a racecourse:

Mark	Description	Location
“BWR”	Breakwater	East of Plattsburgh Boat Basin
“C”	White cylinder	Center of Cumberland Bay N44 41.316 W73 24.950
“CI”	Crab Island	
“CPI”	Carlton’s Prize	
“E”	White cylinder	Southern tip of Cumberland Head N44 41.434 W73 23.921
“GC1”	Green Can	Cumberland Bay
“GC3”	Green Can	West of Valcour Island
“GI”	Garden Island	South of Valcour Island
“N”	White cylinder	Northern Cumberland Bay N44 42.793 W73 25.583
“O”	Orange Tetrahedron or Sphere	Drop mark with location depending on course selected
“PI”	Providence Island	
“RC”	Race Committee Boat	
“RN2”	Red Nun	Valcour Shoal
“RN4”	Red Nun	North of Ausable Point
“RN24”	Red Nun	North of Crab Island
“RN26”	Red Nun	Spoon Bay, east of Valcour Island
“RN28”	Red Nun	East of Garden Island
“S”	White cylinder	Southern Cumberland Bay, North of Crab Island; N44 40.276 W73 24.752
“W”	West cylinder	Western Cumberland Bay coordinates N 44 41 58.93 W 73 25 56.20



3. The Start

3.1 Start Rules

Races will be started in accordance with the 2009-2012 RRS rule 26.

3.2 The Start and Finishing Lines

The start and finishing lines will be between a staff displaying the blue RC flag on the Race Committee boat and the nearest course mark. The Committee boat shall be on the starboard end of the starting line.

3.3 Starting Penalties

RRS Rule 30.1 shall be in effect. The Committee boat need not display the I flag.

3.4 Starting Line Length

The Starting Line length shall be equal to the sum of the waterline lengths of all participating boats but not less than 100 yards long. Redress on line length is not allowed.

4. Time Limits

4.1 PHRF Wednesday Night Series

First boat shall finish within 2 hours. Boats finishing after 2.5 hours shall be scored DNF.

4.2 PHRF Sunday Series Races, except The Eisinger Cup Regatta

First boat shall finish within 4 hours. Boats finishing after 5 hours shall be scored DNF.

4.3 The Eisinger Cup Regatta

The first boat shall finish within 2 hours for each race. Boats finishing after 2.5 hours for race shall be scored DNF.

5. Protests

5.1 Any protest must be in accordance with RRS Part 5, except as modified by these sailing instructions. If these rules are not met the protest will not be heard.

5.2 A boat intending to protest shall notify the O.D. of its intent to protest immediately after crossing the finish line.

5.3 Protests shall be written on a U.S. Sailing protest form and given to O.D. not later than two hours after the last boat in the protestor's class has finished the race of the day.

5.4 The US Sailing protest form is in the back of this handbook. Copies of blank forms can be obtained from the O.D., are located on the Committee Boat, can be downloaded from VSC or U.S. Sailing's websites and can be found on page 132 of the RRS 2009-2012.

6. Classes

6.1 When warranted (two or more boats in a class), there will be two classes, racing and cruising. The cruising class will start 5 minutes after the racing class (Racing start is cruising warning.). Cruising class will sail a shortened course based on the racing course. Cruisers shall hail the committee boat no later than 15 minutes prior to the start of the racing class for instructions.

Valcour Sailing Club Lake Champlain One-design Fleet 2008 Notice of Race and Sailing Instructions

1 Organizing Authority

The Organizing Authority is the United States Soling Association (USSA), in

conjunction with the Valcour Sailing Club, Inc.

2 Rules

All events will be governed by the Racing Rules of Sailing (RRS) 2009-2012, and the Rules of the International Soling Association (ISA). All racing will be fleet racing.

3 Advertising

All events will be category C events in accordance with RRS 79 and Appendix G.

4 Eligibility and Entry

Skippers are required to be members of the Valcour Sailing Club and encouraged to join the USSA or CSA. Others may compete by invitation. Any one-design racing class with at least three class legal boats is eligible to participate in VSC One-design racing.

5 Changes to Instructions

Any changes to the sailing instructions will be included in a handout on race day.

6 Schedule of Events

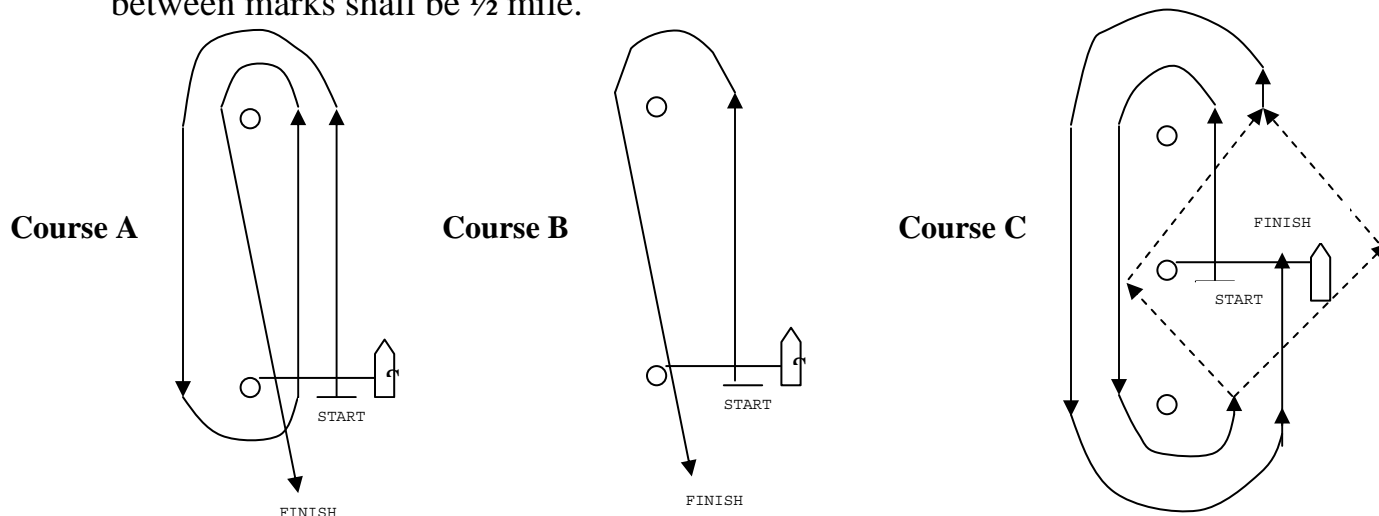
6.1 Tuesday Night series. Each Tuesday night will consist of one or more races.

7 Racing Area

The racing area will be in Cumberland Bay, Plattsburgh, NY.

8 Courses

All races shall be sailed on Course A, Course B, or Course C. The Race Committee will display the course letter along with the marks to be rounded for the first lap. Course A may be shortened at any mark. Course C may be shortened only at the start/finish line. Note that you must not cross the start/finish line on Course C unless starting or finishing. Unless specified as a long race, the distance between marks shall be ½ mile.



9 Marks

VSC permanent marks located within Cumberland Bay are white cylinders designated by their compass heading as viewed from the center of Cumberland Bay. Navigation buoys are either green cans or red nuns designated by the most recent NOAA navigation chart. The following marks may be specified for a racecourse.

Mark	Description	Location
“N”	White cylinder	Northern Cumberland Bay
“W”	White cylinder	Western Cumberland Bay
“E”	White cylinder	SE tip of Cumberland Head
“S”	White cylinder	Southern Cumberland Bay, North of Crab Island
“C”	White cylinder	Center of Cumberland Bay
“GC1”	Green Can	Cumberland Bay
“O”	Orange tetrahedron	Drop mark with location depending on the course selected
“RC”	Race Committee Boat	

10 The Start

10.1 Races will be started in accordance with the 2009-2012 RRS rule 26.

10.2 The OD can cancel or abandon the race from shore or on the water at anytime due to weather or safety conditions.

11 The Start and Finish Lines

11.1 The start and finish lines will be between a staff displaying the blue RC flag on the Race Committee boat and the nearest course mark. The Committee boat shall be on the starboard end of the starting line.

11.2 Starting line length shall be calculated as follows: #of boats x 27' x 1.25. With 10 boats racing the line length should be 337 feet. Lines around 300 feet should be adequate for most races. Members of the Race Committee may notify the OD and then change the position of the pin end of the starting line before the starting sequence in an effort to make the line square and an appropriate length.

11.3 The Green Can (GC1) shall when possible, not be used as the pin end of the start line. No redress on line length is allowed.

13 Time Limits

13.1 Tuesday Series. The first boat shall finish within 1.5 hours from its start. Boats finishing after 2 hours shall be scored as DNF.

13.2 Weekend Series.

Long races The first boat shall finish within 2.5 hours. Boats finishing after 3 hours shall be scored DNF.

Short races The first boat shall finish within 1.5 hours. Boats finishing after 2 hours shall be scored DNF.

VSC Courses For races involving VSC courses, the time restraints shall be the same as those used by the PHRF fleet.

13.3 Abandoned Races. The race committee chairman or designee may choose to abandon races due to inclement weather, darkness, or lack of wind at any time before or during races.

14 Protests

14.1 Any protest must be in accordance with RRS Part 5, except as modified by these sailing instructions. If these rules are not met the protest will not be heard.

14.2 A boat intending to protest shall notify the O.D. of its intent to protest immediately after crossing the finish line.

14.3 Protests shall be written on a U.S. Sailing protest form and given to O.D. not later than two hours after the end of the race.

14.4 Protest Forms: One US Sailing protest form is in the back of this handbook. Copies of blank forms can be obtained from the O.D., are located on the Committee Boat, can be downloaded from VSC or U.S. Sailing's websites and can be found on page 132 of the RRS.

14.5 The Protest Committee Chair will inform all interested parties and Protest Committee members of the protest and the location of and hold the protest hearing as soon as practical and reasonable for all interested parties after the protested race.

15 Scoring

15.1 Low point system of Appendix A will apply.

15.2 Tuesday Night Series. Racing will take place on 15 Tuesday nights, each consisting of 1 or more races. All races shall be scored separately. A boat's series standing shall be the total of its scores. There will be 4 throw outs.

15.3 Lake Champlain Soling Championships. Three or more races must be completed to score as a regatta. With 5 or more races there shall be one throw out, otherwise none.

15.4 The Weekend Series. A boat's Weekend Series standing shall be the total of all points scored in each individual race. With 13 or more races completed, two throw outs are permitted. With 12 or fewer races completed, one throw out is permitted.

16 Awards

16.1 Tuesday Night Series. The top three finishers in the series will receive awards at the Fall Banquet.

16.2 Lake Champlain Soling Championships. The coveted championship lamp shall be awarded to the winner of this regatta.

16.3 Soling Boat of the Year. This award is presented to the Soling with the lowest overall score of all race and/or regatta scores combined with no throw outs.

Valcour Sailing Club

Race Committee Schedule and O.D. Instructions

1. Schedule

1.1. PHRF Series. The Wednesday and Sunday PHRF series shall be officiated by boat crews from the Soling Fleet.

1.2. Soling Series. The Tuesday and Sunday series shall be officiated by boat crews from the PHRF Fleet.

1.3. Boat Crew Responsibilities. Race committee duty is assigned to a boat's crew. ***A minimum of two race officers with a combined ability to drive the RC boat, set a course, and administer the start and finish duties of the race are required to participate.*** Qualified substitutes may take the place of members from the assigned boat with permission from the Race Committee Chairperson. Boat owners are encouraged, but not required, to participate. Some boat owners may be required to participate in order to meet the requirements of this duty.

2. Penalties

2.1. Failure to meet the provisions of 1.3 will result in a penalty against the scheduled boat crew.

2.2. The Race Committee will apply a score of DNR for the following three races in which the penalized boat would normally participate. For boats that do not participate regularly, the Race Committee may opt to apply a score of DNR for the following three races in which the penalized boat actually participates.

2.3. This penalty will be assessed for failure to appear at the scheduled race or failure to supply two officials with the proper skills as defined in 1.3.

3. O.D. Training

The Race Committee will host an O.D. training session. The training session will be announced on the Club's website and will include the proper use of the RC boat, and proper OD procedures. All crewmembers and skippers who have not previously operated the committee boat and/or have not run a VSC race are required to attend the session or make arrangements to become familiar with the operations of the boat and running a race prior to taking the committee boat from the dock.